

Two-Story Lobby



Community Room



Guest Suite



Choose Your New Address....

UNIT	UNIT TYPE	UNIT ORIENTATION	UNIT DESCRIPTION	UNIT SIZE	TERRACE	AREA TOTAL	UNIT PRICE	MONTHLY ASSN FEE	PARKING STALLS*
301	D	Lake Monona East - Capitol North	2 BR / 2 Bath	1,646	179	1,825	595,000	490	1
308	F	Capitol North / East	2 BR / 2 Bath	1,436	183	1,619	485,000	467	1
405	E	Lake Monona South -West	1 BR Loft, Study + 2 Bath	1,437	115	1,552	SOLD	467	1
408	F	Capitol North / East	2 BR / 2 Bath	1,436	183	1,619	495,000	467	1
605	E	West / Capitol North	2 BR / 2 Bath	1,437	115	1,552	540,000	467	1

***ADDITIONAL PARKING STALLS AVAILABLE**



Facts & Features

Developer / Marketing: McGrath Associates, Inc.
Architects: Eppstein-Uhen

General Contractor:
General Contractor:
Landscape Architects:

JH Findorff & Son - Building Core and Shell
Krupp General Contractor - Building Interior
Schreiber Anderson Associates

Green Built Home TM
Floors:
Windows:
Sound Isolation:
Ceiling Heights:
Storage:
Extra Parking:

Lake and Capitol
Views Available
Don't Wait
4 LEFT!

Environmentally Friendly Sustainable Construction
8" Post-tensioned Concrete
Aluminum Framed, Dual Paned 1-1/16" Overall Thickness
Triple Demising Walls - 11' 5/8" thick w/ 5 Drywall Layers
Up to 10' 4"
Storage unit included in price
Additional Spaces Available to Purchase

Fitness Center



Business Center

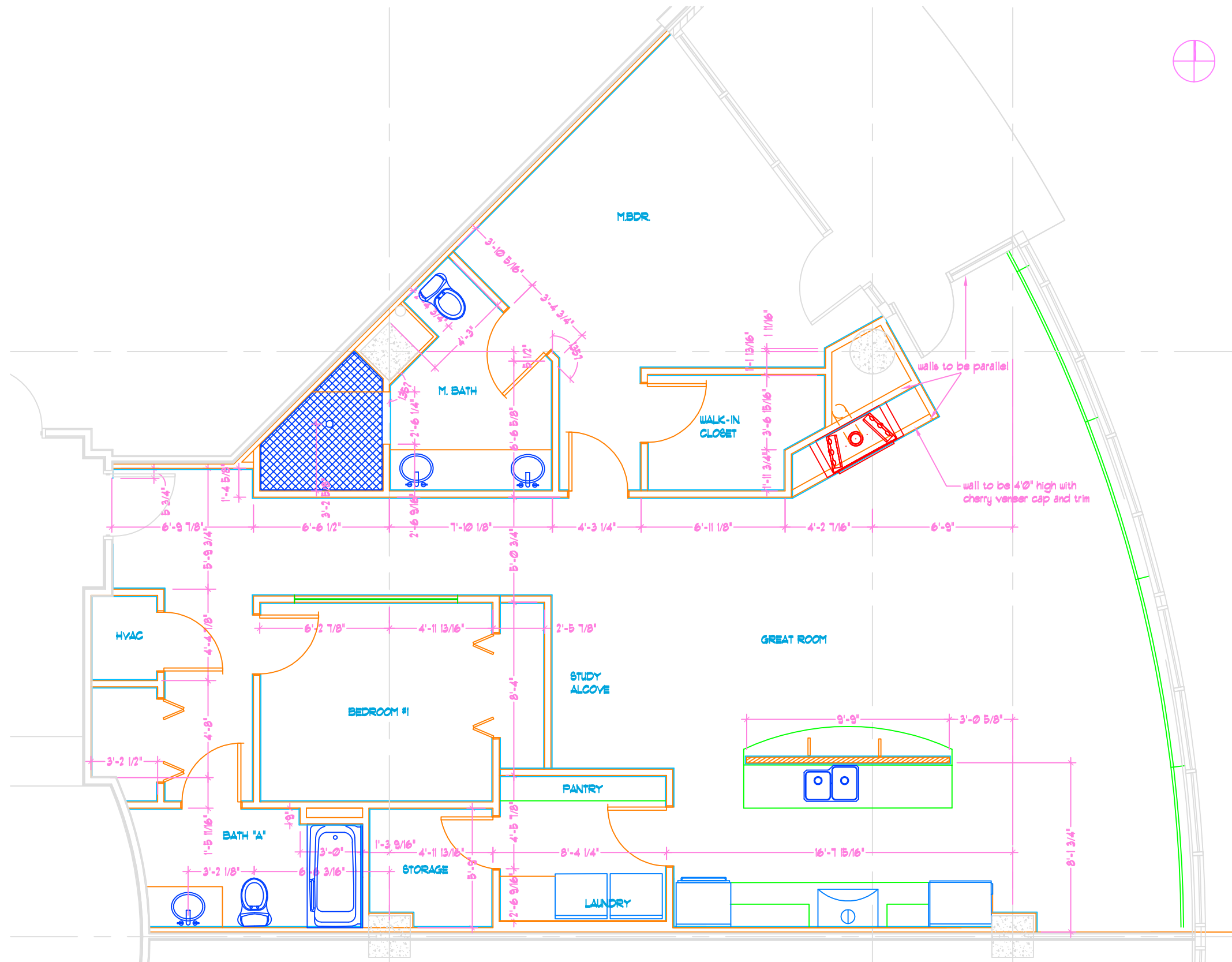


Green Roof Terrace



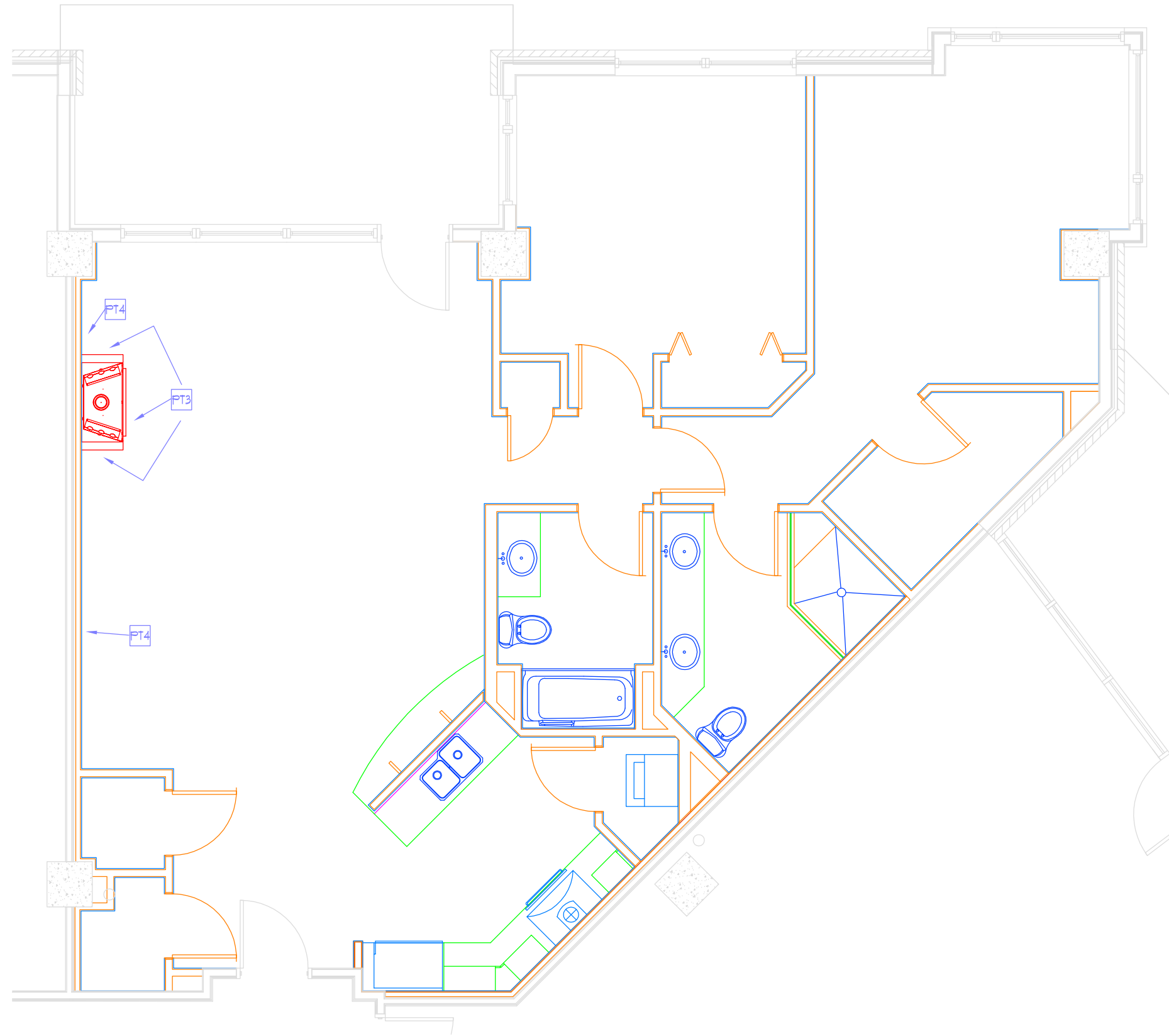
Pricing & availability effective May 1, 2009 and subject to change without notice
Contact Brendan McGrath - First Weber Group @ 608.219.3675 with any questions





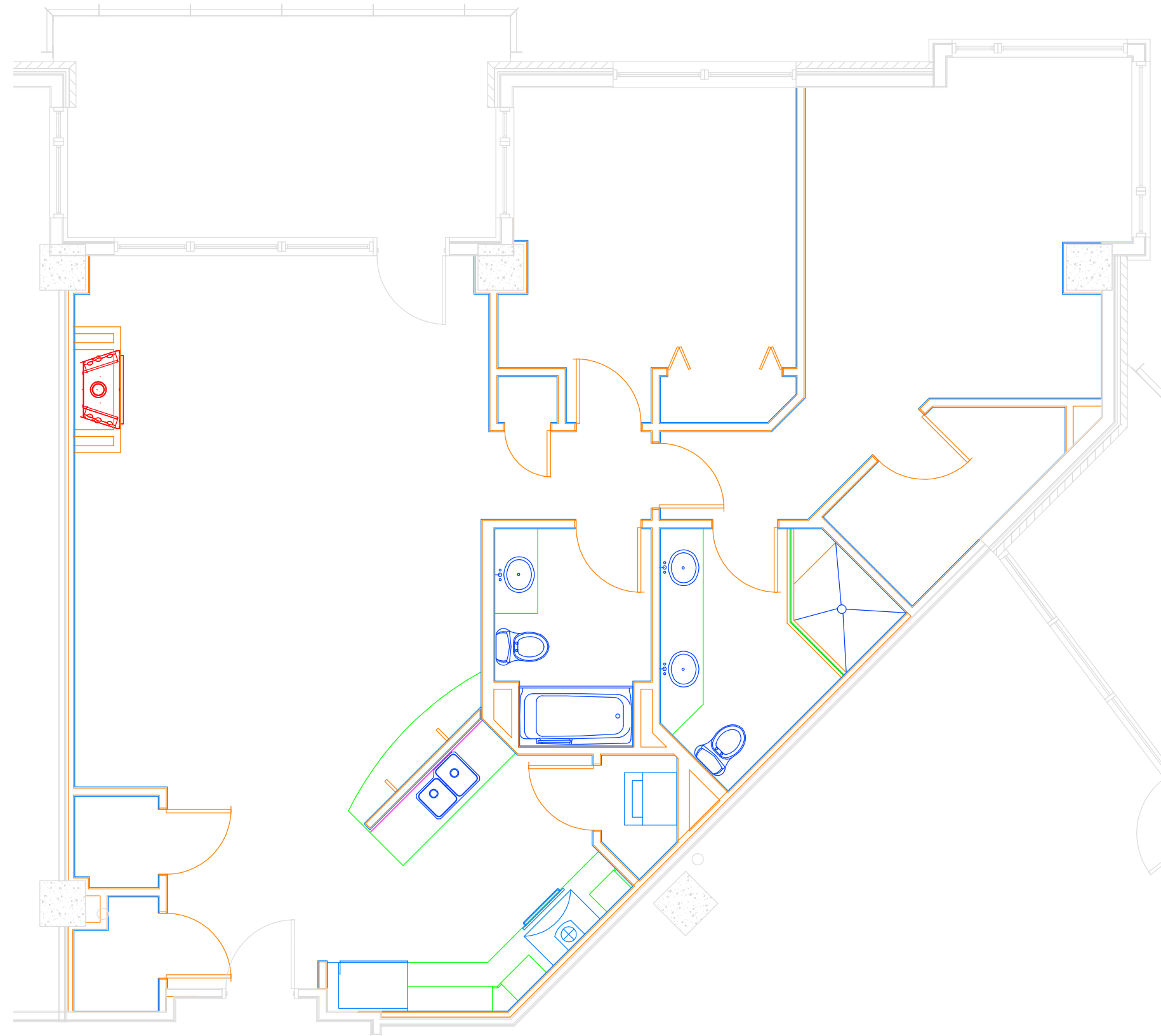
1 FLOORPLAN
NTS

UNIT 301



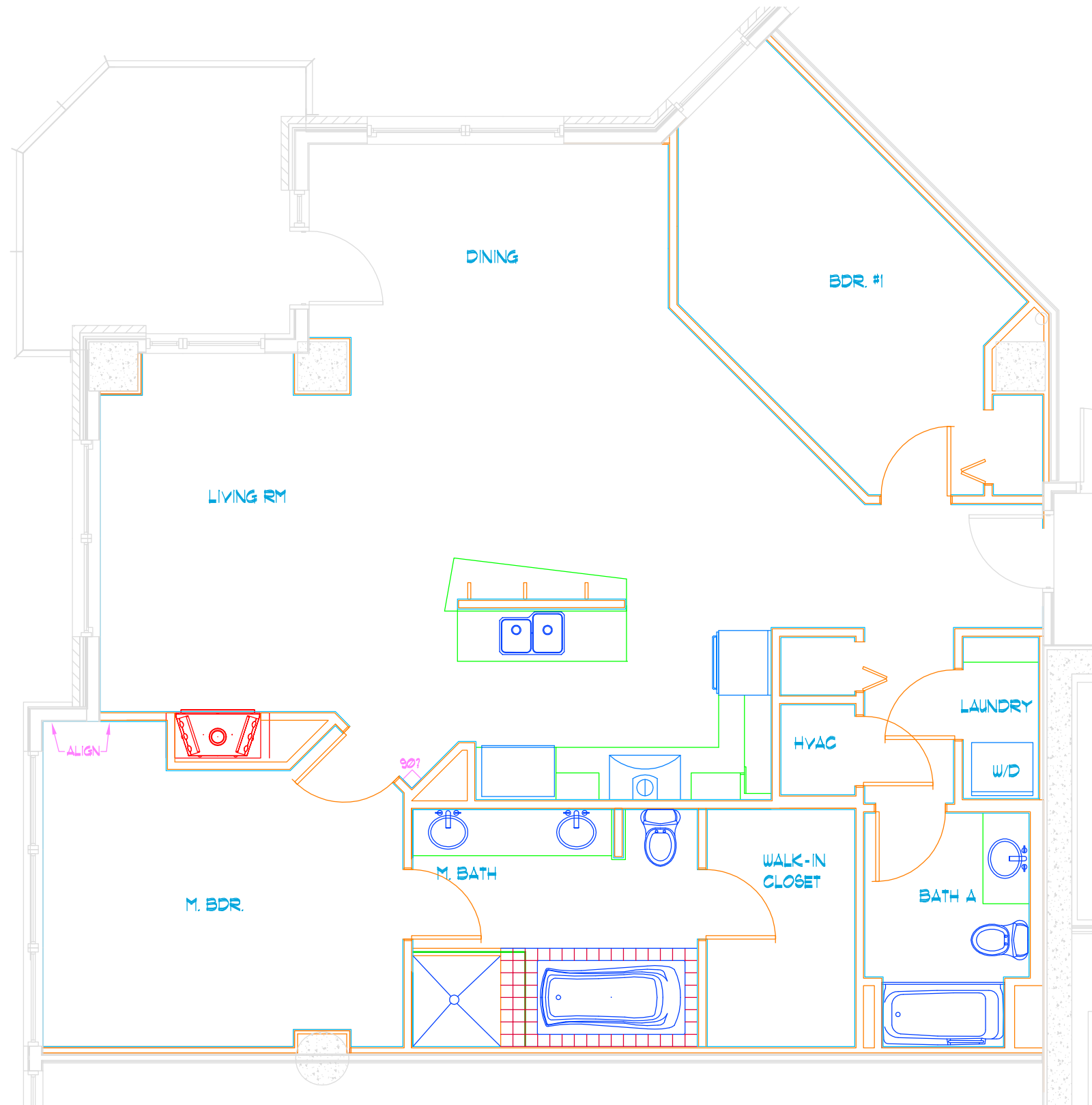
UNIT 308





UNIT 408





605